



No.:

Date: 19-DEC-2012

Customer :

TECHNICAL PROPOSAL

Three-phase induction motor - Squirrel cage rotor

Product line : W22 NEMA Premium - Ball Bearings

Catalog Number : 01036ET3E215TC-W22

List Price : \$1,383

Notes:

Performed by:

Checked:



No.:

Date: 19-DEC-2012

## DATA SHEET

### Three-phase induction motor - Squirrel cage rotor

Customer :  
Product line : W22 NEMA Premium - Ball Bearings

Frame : 215T  
Output : 10 HP  
Frequency : 60 Hz  
Poles : 2  
Full load speed : 3515  
Slip : 2.36 %  
Voltage : 208-230/460 V  
Rated current : 25.7-23.2/11.6 A  
Locked rotor current : 167/83.5 A  
Locked rotor current (I<sub>L</sub>/I<sub>n</sub>) : 7.2  
No-load current : 7.40/3.70 A  
Full load torque : 14.7 lb.ft  
Locked rotor torque : 210 %  
Breakdown torque : 290 %  
Design : B  
Insulation class : F  
Temperature rise : 80 K  
Locked rotor time : 24 s (hot)  
Service factor : 1.25  
Duty cycle : S1  
Ambient temperature : -20°C - +40°C  
Altitude : 1000  
Degree of Protection : IP55  
Approximate weight : 163 lb  
Moment of inertia : 0.63620 sq.ft.lb  
Noise level : 72 dB(A)

	D.E.	N.D.E.	Load	Power factor	Efficiency (%)
Bearings	6308 ZZ	6207 ZZ	100%	0.90	90.2
Regreasing interval	---	---	75%	0.87	90.2
Grease amount	---	---	50%	0.79	89.5

Notes:

Performed by

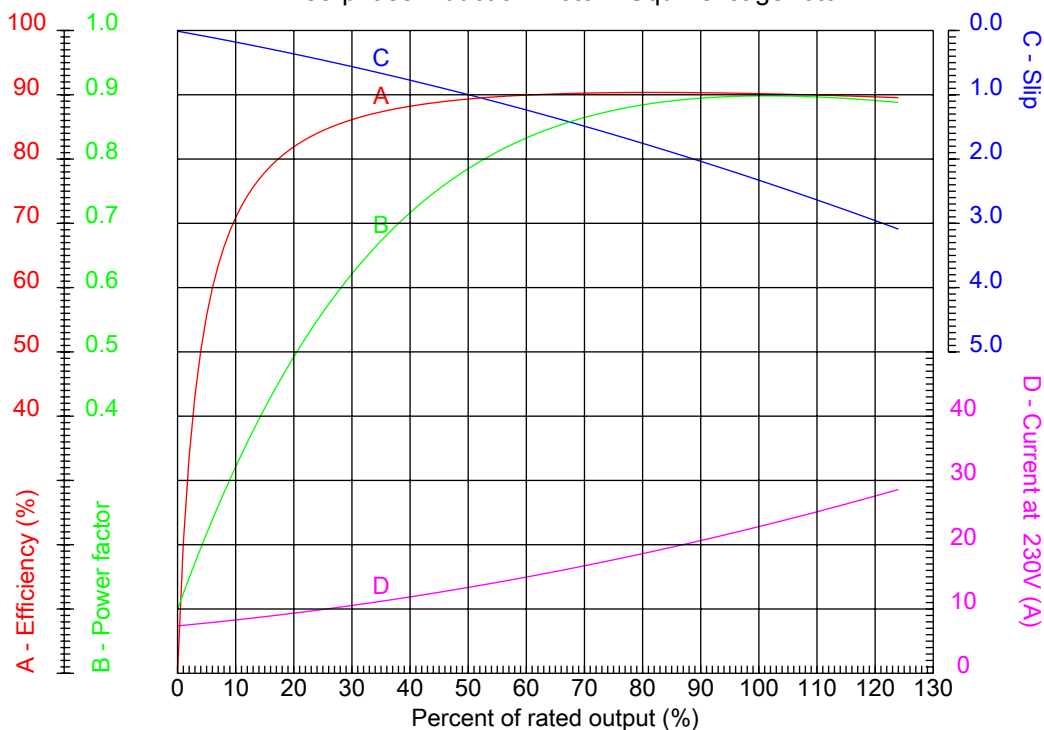
Checked



No.:

Date: 19-DEC-2012

PERFORMANCE CURVES RELATED TO RATED OUTPUT  
Three-phase induction motor - Squirrel cage rotor



Customer :  
Product line : W22 NEMA Premium - Ball Bearings

Frame	: 215T	Locked rotor current (I <sub>l</sub> /I <sub>n</sub> )	: 7.2
Output	: 10 HP	Duty cycle	: S1
Frequency	: 60 Hz	Service factor	: 1.25
Full load speed	: 3515	Design	: B
Voltage	: 208-230/460 V	Locked rotor torque	: 210 %
Rated current	: 25.7-23.2/11.6 A	Breakdown torque	: 290 %
Insulation class	: F		

Notes:

Performed by

Checked

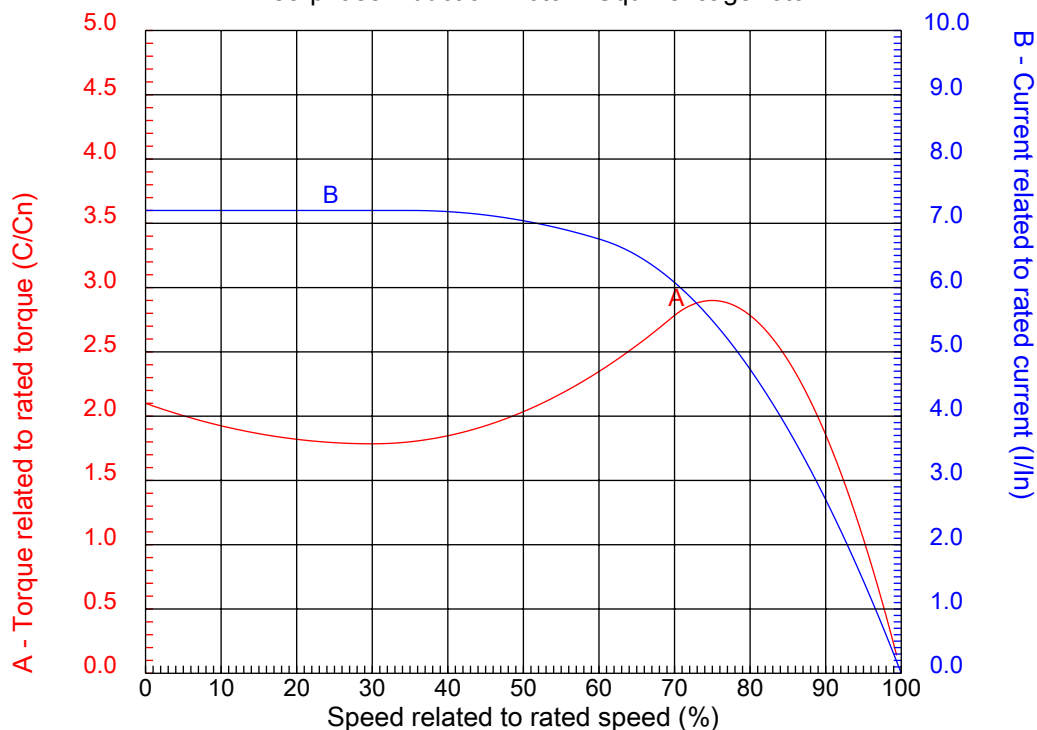


No.:

Date: 19-DEC-2012

### CHARACTERISTIC CURVES RELATED TO SPEED

Three-phase induction motor - Squirrel cage rotor



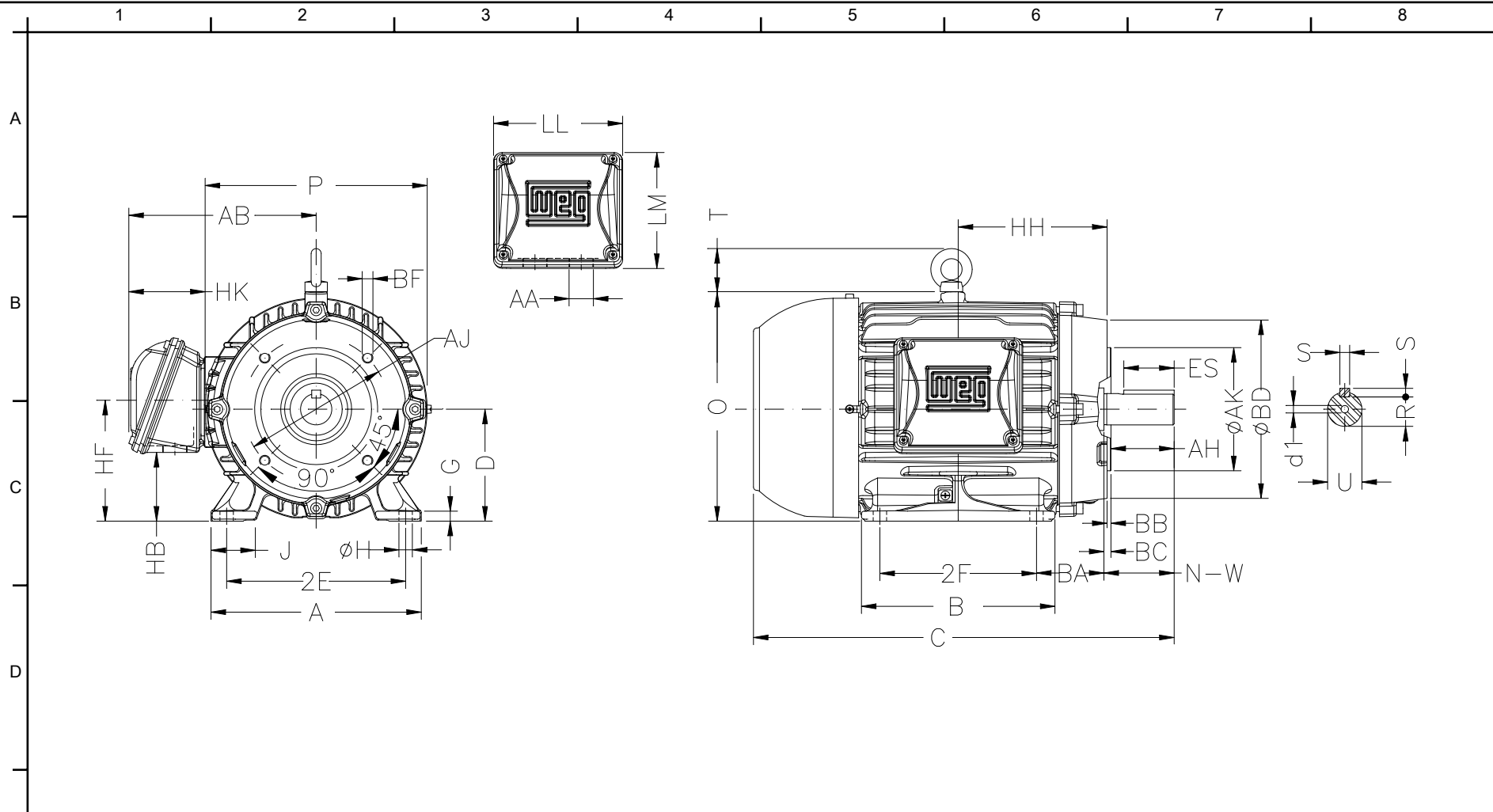
Customer :  
Product line : W22 NEMA Premium - Ball Bearings

Frame	: 215T	Locked rotor current (I <sub>l</sub> /I <sub>n</sub> )	: 7.2
Output	: 10 HP	Duty cycle	: S1
Frequency	: 60 Hz	Service factor	: 1.25
Full load speed	: 3515	Design	: B
Voltage	: 208-230/460 V	Locked rotor torque	: 210 %
Rated current	: 25.7-23.2/11.6 A	Breakdown torque	: 290 %
Insulation class	: F		

Notes:

Performed by

Checked



E	2E	J	A	P	AB	Notes:
	8.500	1.988	9.764	10.669	8.583	
	2F	K	B	BA	FBA	
F	7.000	2.165	8.858	3.500	5.921	Performed by:
	U	N-W	ES	S	R	
	1.375	3.375	2.480	0.313	1.203	
F	depth	D	G	HB	O	Checked:
	0.313	5.250	0.827	3.006	10.841	
	T	HD	HF	HH	HK	
F	1.772	12.613	5.250	7.000	3.110	Customer:
	H	C	FC	LL	LM	
	0.406	19.517	22.546	5.512	5.236	
F	AA	d1	d2	Flange	AJ	W22 NEMA Premium - Ball Bearings
	NPT 1"	A 4	A 4	FC-184	7.250	
	AK	BD	BF	BB	BC	
F	8.500	8.875	UNC 1/2"x13	0.250	0.250	Three-phase induction motor
	AH					
	3.125					Frame 215T - IP55

