

## VP4 Assembly Instructions



Recommended Tools



Step #1 Remove Items from box



Step #2: Uncoil Fabric as Shown



Step #3: Locate long bar with two holes is bottom left



Step #4 Insert foot into long bar with two holes



Step #5 Insert short bar with one corner bracket into the other long bar, this is bottom right.

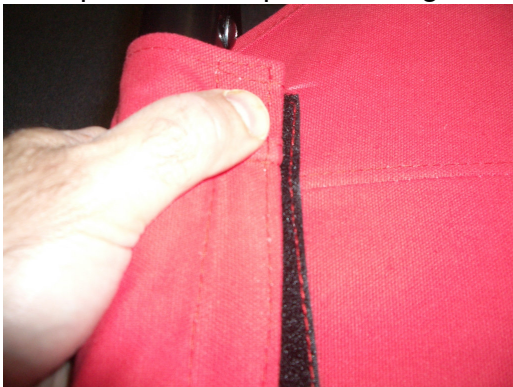
## VP4 Assembly Instructions



Step #6: Insert the short bar with two corner caps into the top of the long tubes.



Step #7: Add screws to where appropriate and tighten.



Step #8: Tighten the fabric on the top and bottom of the partition.



Step #9: Adjust joints as necessary to make sure partition is square.