

NEW PRODUCT

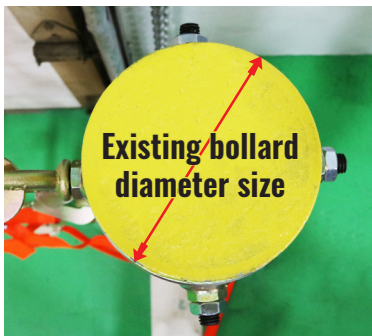
Existing Bollard Safety Net Package™

YOUR EXISTING BOLLARDS



Key Features:

- Uses already existing bollards
- Easy retrofit installation
- No power tools or drilling
- Multiple net attachments
- Low cost of ownership
- Use anywhere in your facility



Tell us your existing bollard diameter.

Ring Option 1

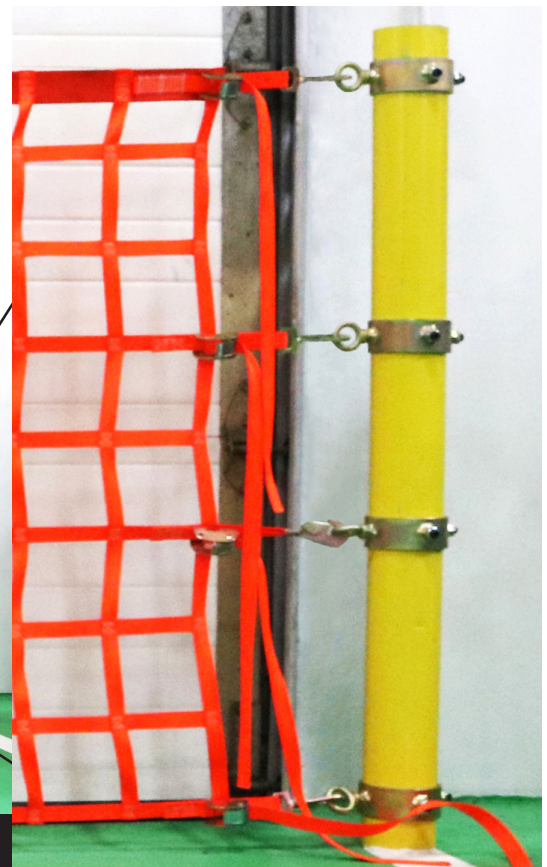
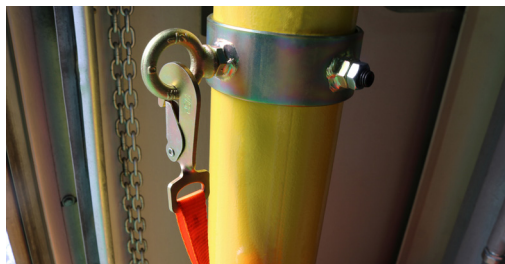


3 screws, 1 eye bolt per ring. Use for single net attachment.

Ring Option 2



2 screws, 2 eye bolts per ring. Use for double net attachment on same bollard.

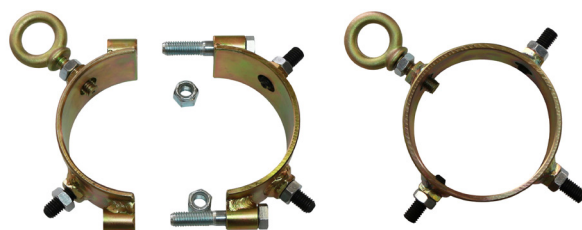




Installation of your Existing Bollard Ring Safety Net Package

1. Measure your opening size or protected area. Measure inside bollard to inside bollard, or the door opening to determine the size net needed.
 *Nets allow for 18" of adjustment

2. Measure your bollard diameter to determine ring size; if an obstruction is present, you will need to purchase a split ring for each obstructed placement. ***Split rings allow you to move around cross beams where a standard ring cannot slide.**



3. For the standard ring, slide the ring onto the existing bollard and position eye-bolt in the direction you wish to attach the net. * Any direction may be used depending on your location and space available. Use two eye-bolts where corners or L-shapes are needed.

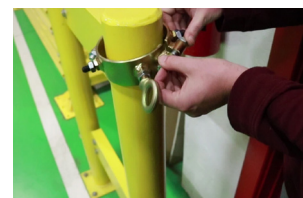
A. If split ring is needed due to an obstruction, place the split ring in positions and use the hex bolt and nut to tighten the two halves of the split ring together. Continue to step 4 once tightened.

4. Use supplied allen/hex key to fasten the allen/hex bolt against the bollard. Hand tighten the eye-bolt to the bollard. Use crescent wrench (or equivalent) and tighten the nut on allen/hex screw to hold it in place.

5. Continue sliding rings onto the bollard and space them evenly until all four bollard rings are in position.



6. Measure each bollard ring from the floor to set height of the opposite 4 rings that will be installed next. Now that you know your heights measure, mark the placement, and finally slide the ring to place and repeat steps for securing your safety ring.



7. Connect the 8 snap hooks to the rings eye bolts to attach the net. * Make sure you look for the vinyl tag which indicates the top side of net. 2" straps are located on top and bottom.

8. Make any necessary adjustments that may be needed in order for our net to serve its optimal purpose.

9. If the net and ring layout are even and secure you can now tighten the fastening straps on the net so it is nice and snug.

10. Finally, Make any necessary adjustments needed to even the placement of the net. If the net and ring layout are even and secure, you can now tighten the fastening straps on the net.