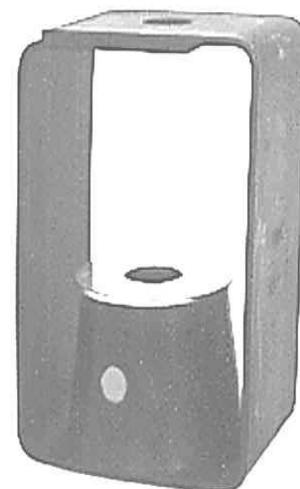
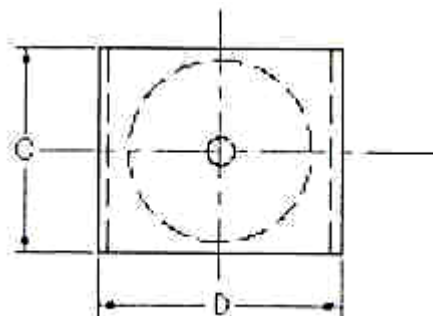
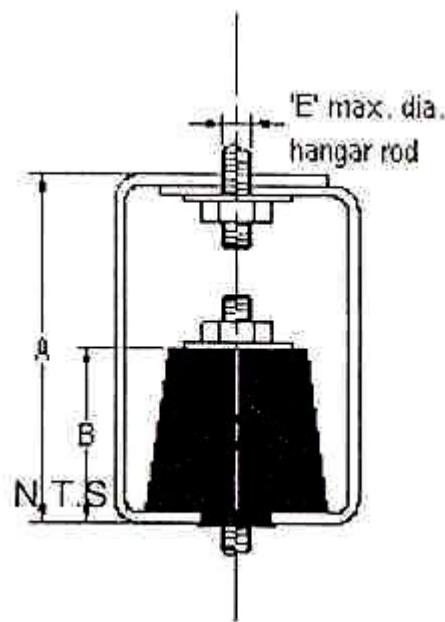




HND Series HANGERS (Double Deflection)

HND Series hangers are neoprene elements housed in sturdy steel housings. Elements include top and bottom steel plates for uniform load distribution. "**D**" stands for double deflection for neoprene elements, single deflection element are ineffective for vibration isolation and are not available. All elements are color coded for ease of identification. **HND** Series hangers are used for hanging small machines like fan coil units and fans etc.



ISOLATOR MODEL	MAX. LOAD (LBS.)	DEFLECTION (INCHES)	ISOLATOR DIMENSIONS (INCHES)					COLOR
			A	B	C	D	E	
HND-A-1	30	2/5	3	1 3/8	2	2 1/4	3/8	BLUE
HND-A-2	40	2/5	3	1 3/8	2	2 1/4	3/8	RED
HND-A-3	70	2/5	3	1 3/8	2	2 1/4	3/8	GREEN
HND-A-4	115	2/5	3	1 3/8	2	2 1/4	3/8	BLACK
HND-B-1	165	1/2	4 1/2	1 7/8	2 1/4	3	1/2	BLUE
HND-B-2	235	1/2	4 1/2	1 7/8	2 1/4	3	1/2	RED
HND-B-3	375	1/2	4 1/2	1 7/8	2 1/4	3	1/2	GREEN
HND-B-4	545	1/2	4 1/2	1 7/8	2 1/4	3	1/2	BLACK
HND-C-3	745	1/2	6	3 1/8	3 1/2	4	1/2	GREEN
HND-C-4	1245	1/2	6	3 1/8	3 1/2	4	1/2	BLACK
HND-D-2	2240	1/2	6	3 1/8	4	4 1/2	5/8	RED
HND-D-3	3000	1/2	6	3 1/8	4	4 1/2	5/8	GREEN
HND-D-4	4000	1/2	6	3 1/8	4	4 1/2	5/8	BLACK