



Industrial Products, Inc.

Ergonomic Drum Handler DM-1100 Operating Instructions and Parts Manual

ATTENTION: TO INSURE SAFE AND EASY USE OF YOUR WESCO DRUM HANDLER, READ THESE INSTRUCTIONS BEFORE USING.

Description

The Wesco Ergonomic Drum Handler DM-1100s are designed specifically for lifting and transporting 30, 55 and 85 gallon steel, fiber and poly drums.

This product is distributed by:

Wesco Industrial Products, Inc

1250 Welsh Road

North Wales, PA 19454

Tel: 215-699-7031 Fax: 215-699-3836

Contact the factory for parts information and ordering.

Visit us on the web at www.wescomfg.com

Unpacking

When unpacking the Wesco Product, check carefully for shipping damage and missing parts. If damage has occurred or any parts are missing, file a claim with the delivering carrier within 24 hours and notify the dealer from whom the unit was purchased.

Warranty Repairs

If the unit does not work properly, contact your dealer or the factory (215-699-7031) for units less than 90 days old.

Non-Warranty Service

If units are older than 90 days, repairs can be made easily on site with factory supplied parts.

NOTE: Do not send units to the factory for service without first obtaining a "Return Merchandise Authorization" (RMA) number from the customer service department. We will not be responsible for merchandise returned without proper authorization.

General Safety Information

The Wesco Model DM1100 is designed for specific functions. To insure proper use, the following instructions must be adhered to:

- (1) Load Rating: 1100 lbs./(legs extended) 650 lbs./(legs retracted)
- (2) DO NOT use unit for loads exceeding the rated capacity.
- (3) This product is designed for use on level floors only. DO NOT use unit, or engage floor lock, on any incline greater than five (5) degrees.

General Safety Information (cont'd)

- (4) Keep hands and feet clear of clamping head, mast and wheels.
- (5) Clamping head must be in full contact with drum rim prior to lifting.
- (6) Be certain rim of fiber or plastic drum is able to withstand the stress of drum lifting procedure.
- (7) Be certain that both ends of lift chain are securely fastened to jack and chain anchor before lifting load.
- (8) DO NOT transport load at maximum height. Transport drum 2 to 3 inches off floor.
- (9) Use extreme care when travelling over uneven floors.
- (10) DO NOT use on ramps
- (11) DO NOT modify this product in any way.
- (12) Periodically inspect for damage, and loose or missing hardware. If required remove unit from service

Operation Instructions

- (1) Move unit towards drum until the clamping head firmly contacts the sidewall of the drum.
Note: Three sets of holes in the top of the mast allow for the adjustment of the clamping head to grab a drum.
- (2) Raise the mast above the frame upright until the lowest adjustment hole clears the mast. While holding the clamping head and slides with one hand, insert the adjustment pin through the appropriate set of holes to obtain the proper height for grabbing a drum
- (3) Engage the floor lock (if present) and raise the drum 2" to 3" off of the floor by stepping on the pumping pedal or using the power lift.
Note: If a drum is to be moved from a raised platform, engage the clamping head against the drum, raise the load to clear the platform, and lower the drum to the recommended height for transportation
- (4) Disengage the floor lock (if present), and transport drum to the desired location.
- (5) Engage floor lock (if present), and lower drum to floor by pressing relief pedal located on left side of hydraulic jack or using the power lift.
Note: If drum is to be positioned on a raised platform, raise the drum so that it clears the platform, move the load to the required position, and lower the drum.

LIMITED WARRANTY

WESCO INDUSTRIAL PRODUCTS (WESCO) warrants to the purchaser of this product for a period of ninety (90) days from the date of purchase that this product shall be free of defects in material and/or workmanship, as follows:

1. WESCO will supply, at no charge, new or rebuilt replacements for any part that fails through a defect in material and/or workmanship during the warranty period. To obtain warranty service, you must deliver the product prepaid, to the WESCO factory.

2. This warranty does not cover any product or product part which has been subject to accident, misuse, abuse or negligence. WESCO shall only be liable under this warranty if the product is used in the manner intended by the manufacturer as specified in the written instructions furnished with this product.

REPAIR OR REPLACEMENT AS PROVIDED UNDER THIS WARRANTY IS THE EXCLUSIVE REMEDY OF THE PURCHASER. ANY EXPRESS WARRANTY NOT PROVIDED IN THIS WARRANTY DOCUMENT, AND ANY REMEDY FOR BREACH OF CONTRACT THAT, BUT FOR THIS PROVISION, MIGHT ARISE BY IMPLICATION OR OPERATION OF LAW, IS HEREBY EXCLUDED AND DISCLAIMED. UNDER NO CIRCUMSTANCES SHALL WESCO BE LIABLE TO PURCHASER OR ANY OTHER PERSON FOR ANY INCIDENTAL OR CONSEQUENTIAL DAMAGES, WHETHER ARISING OUT OF BREACH OF WARRANTY, EXPRESS OR IMPLIED, A BREACH OF CONTRACT OR OTHERWISE. EXCEPT TO THE EXTENT PROHIBITED BY APPLICABLE LAW, ANY IMPLIED WARRANTY OF MERCHANTABILITY AND FITNESS FOR ANY PARTICULAR PURPOSE ARE EXPRESSLY LIMITED IN DURATION TO THE DURATION OF THIS LIMITED WARRANTY.

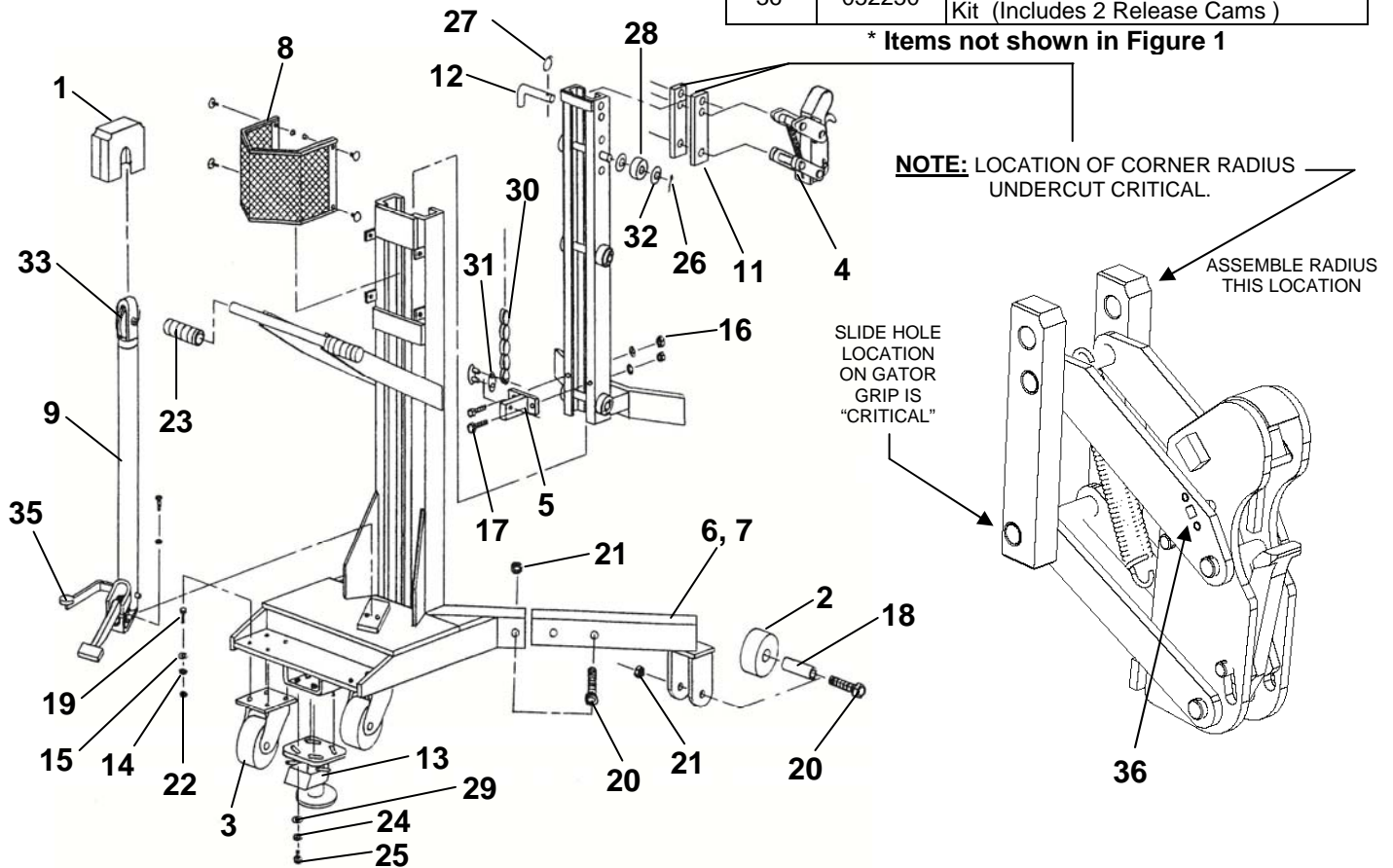
Some states do not allow the exclusion or limitation of incidental or consequential damages, or allow limitations on how long any implied warranty lasts, so the above limitations may not apply to you. This warranty gives you specific legal rights, and you may also have other rights which vary from state to state.

Spare Parts (1-13)

Item	Part No.	Description
1	051618	Chain Roller Guard
2	053769	5x2 Phenolic Wheel
3	054267	Swivel Caster Assembly
4	055079	Gator Grip Jaw Assembly
5	055006	Chain Anchor
6	055007	RH Outrigger
	054933	RH Outrigger Extended (For 240155 Only)
7	055008	LH Outrigger Weldment
	054932	LH Outrigger Extended (For 240155 Only)
8	055090	Guard Assembly (For 240155 & 240150 Only)
	054923	Extended Guard Assembly (For 240154, 240156 & 240157 Only)
9	055016	40" Hydraulic Jack – Foot Pump (For 240150, 240154 & 240155 Only)
	051169	28" Cylinder – Powered Model (For 240156 & 240157 Only)
*10	052723	Hydraulic Jack Seal Kit
11	055286	Gator Grip Slide
12	055063	Adjustment Pin
13	150001	Floor Lock Assembly (For Units Made Before 8/12)
	492038	Floor Lock Assembly (For Units Made After 7/12)
14	100069	Flat Washer (5/16 SAE)

Spare Parts (14-34)

Item	Part No.	Description
15	100170	Lockwasher (5/16)
16	100642	Hex Nut (3/8-16)
17	105080	Socket Cap Screw (3/8-16x1-1/4)
18	105311	Spanner Bushing
19	108149	Hex Cap Screw (5/16-18 x 1")
20	108161	Hex Cap Screw (1/2-13 x 3-1/3)
21	108174	Lock Hex Nut (1/2-13 2 Way Rev)
22	108175	Hex Nut (5/16-18)
23	108226	Handgrip
24	108427	Flat Washer (1/4 USS)
25	108918	Hex Cap Screw (1/4-20, 7/8L)
26	108943	Cotter Pin (1/8 x 1") (For Units Made Before 8/12)
	100457	Retaining Ring 1/2", Ext. (For Units Made After 7/12)
27	108944	Circle Cotter Pin
28	050853	Carriage Roller
29	100169	1/4" Lockwasher
30	108503	Lift Chain
31	108502	Connecting Link
32	108941	Flat Washer (1 OD x 1/2 ID)
33	108967	Chain Roller
*34	220802	Gator Grip Slide Kit (Includes 2 Slides)
35	055012	Relief Pedal Assembly (For 240150, 240154, 240155 Only)
36	052250	Gator Grip Release Pin Replacement Kit (Includes 2 Release Cams)



Wesco Power Unit Operating Instructions and Parts Manual

Wesco Power Unit is designed to work safely with specified Wesco products to provide powered operation of these specified units. For a full range of Wesco Products, request a catalog, or visit our web site at <http://www.WESCOMFG.com>. Contact the factory if you have problems after reading these instructions, or for parts information and parts ordering.

Unpacking

Upon receipt of your unit, check for shipping damage and missing parts. If damage has occurred or any parts are missing, file a claim with the delivering carrier within 24 hours and notify the dealer from whom the unit was purchased.

To Purchase Parts

A complete parts list with drawings appears in this manual. **To order parts** contact the factory at the phone or fax numbers shown on page 1 of this manual. **Ask for the Parts Order Department.**

Start-up

1. Remove the plastic cover from the unit by removing the (4) hex bolts, (2) on the top and (1) on each side of the cover, holding the cover to the power unit backing plate.
2. With the cover off, inspect for any signs of damage, especially to the back cabinet that houses the battery, electrical and hydraulic power unit parts.
3. Remove plastic pipe plug from the oil reservoir, and screw in the supplied breather cap.
4. Connect the negative (black) wire to the negative battery terminal and tighten.
5. Check all electrical connections for tightness
6. Run the unit up and down to check for any oil leaks.
7. Do not use the unit if there appears to be any damage.
8. Reinstall plastic cover.

General Safety Information

1. Check the unit's capacity tag and or literature to find the rated capacity of the unit. NEVER exceed this capacity as it could cause injury or death.
2. Always operate the unit in the manor described in its instruction manual.
3. Never move the unit unless the load is in the fully lowered position.
4. Do not perform repair work on the unit if there is a load on the unit or the lifting mechanism is not in the fully lower position.
5. All persons must stand clear of the lifting mechanism while the power unit is in operation.
6. Custom alterations of this power unit and the operating unit not made at the factory voids all warranties without exceptions. User made alterations may result in unsafe conditions during the use of unit.

Maintenance

Battery

1. Check charge level. **WARNING:** Do not let the battery discharge completely as damage or reduction of operating life will occur.
2. Check for corroded and loose terminals.
3. Visually inspect for any cracks or damage to the battery casing.
4. Check for loose battery tie-downs.

Charger

1. Inspect wire connections.
2. Check power cord for nicks/damage.

Hydraulic System

1. Inspect pump and cylinder for oil leaks.
2. Check fluid level. Reservoir should be a minimum of one half full with a good grade of hydraulic oil (ISO #32 recommended). **DO NOT** use hydraulic brake fluid.
3. Check hydraulic fittings and hoses.
4. Check hydraulic rods for nicks/damage.

Operation

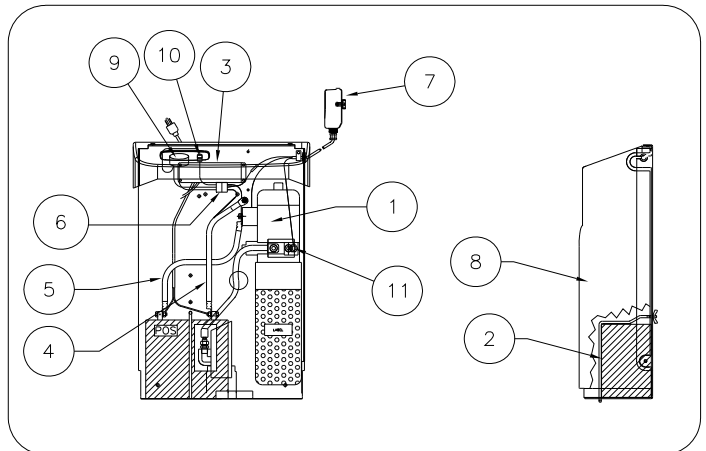
1. Plug charging cord into a grounded circuit outlet and charging will begin.
2. Battery will be fully charged when voltmeter indicates 12.0 - 13.4 volts. A battery showing less than 12.0 volts is not fully charged.
3. When battery is fully charged, unplug charger cord from electrical outlet. **DO NOT ATTEMPT TO MOVE UNIT WHEN CHARGING BATTERY!**
4. The battery charger cord can be left plugged in for an indefinite period of time. The charger may be used anytime to extend the operating time of your battery.
5. The voltmeter will indicate battery condition even when the charger cord is not plugged in.
6. The Charger is capable of handling input voltage from 110V to 220V at 50 Hz to 60 Hz although the unit is supplied with an 110V power cord as standard.

Battery Charging

1. To activate turn on ON/OFF switch.
2. Pull handle back, power drive is now ready for operation.
3. Press throttle rocker slowly forward or reversed, to increase speed press throttle rocker forward.
4. When moving in reverse and an emergency stop is required, press the red switch on top of handle; unit will automatically go into forward direction.
5. To stop, release throttle rocker and place handle in upright position. Turn off power drive by pressing ON/OFF switch.
6. **Never leave power drive unit on when unattended!**

Parts List

Replacement Parts			
Item	Part Number	Description	Qty.
1	109101	Hydraulic Power Unit	1
2	109102	Battery	1
3	109150	Battery Charger	1
4	052779	Battery Cable (Neg.)	1
5	052780	Battery Cable (Pos.)	1
6	055496	Wiring Harness	1
7	052726	Remote Control	1
8	055495	Plastic Cover	1
9	109104	Voltmeter	1
10	109325	On/Off Switch	1
11	109117	Solenoid	1



Factory Repairs

For units older than 90 days, repairs can be made easily on site with factory supplied parts. **NOTE: Do not send units to the factory for service without obtaining an RMA (returned materials authorization) number from the customer service department. Wesco will not be responsible for goods returned without proper authorization.**

Limited Warranty

Wesco Industrial Products, Inc. (WESCO) warrants to the purchaser of this product for a period of one year from the date of purchase that this product shall be free of defects in material and/or workmanship, as follows:

1. WESCO will supply, at no charge, new or rebuilt replacements for any part that fails through a defect in material and/or workmanship during the warranty period. To obtain warranty service, you must deliver the product prepaid, to the WESCO factory with a corresponding RMA(returned materials authorization).
2. This warranty does not cover any product or product part which has been subject to accident, misuse, abuse or negligence. WESCO shall only be liable under this warranty if the product is used in the manner intended by the manufacturer as specified in the written instructions furnished with this product.

REPAIR OR REPLACEMENT AS PROVIDED UNDER THIS WARRANTY IS THE EXCLUSIVE REMEDY OF THE PURCHASER. ANY EXPRESS WARRANTY NOT PROVIDED IN THIS WARRANTY DOCUMENT, AND ANY REMEDY FOR BREACH OF CONTRACT THAT, BUT FOR THIS PROVISION, MIGHT ARISE BY IMPLICATION OR OPERATION OF LAW, IS HEREBY EXCLUDED AND DISCLAIMED. UNDER NO CIRCUMSTANCES SHALL WESCO BE LIABLE TO PURCHASER OR ANY OTHER PERSON FOR ANY INCIDENTAL OR CONSEQUENTIAL DAMAGES, WHETHER ARISING OUT OF BREACH OF WARRANTY, EXPRESS OR IMPLIED, A BREACH OF CONTRACT OR OTHERWISE. EXCEPT TO THE EXTENT PROHIBITED BY APPLICABLE LAW, ANY IMPLIED WARRANTY OF MERCHANTABILITY AND FITNESS FOR ANY PARTICULAR PURPOSE ARE EXPRESSLY LIMITED IN DURATION TO THE DURATION OF THIS LIMITED WARRANTY.

Some states do not allow the exclusion or limitation of incidental or consequential damages, or allow limitations on how long any implied warranty lasts, so the above limitations may not apply to you. This warranty gives you specific legal rights, and you may also have other rights which vary from state to state. © Copyright 2012 Wesco Industrial Products, Inc.

ATTENTION: TO INSURE SAFE AND EASY USE OF YOUR WESCO POWER DRIVE UNIT, READ THESE INSTRUCTIONS BEFORE USING.

Description

The Wesco Power Drive Units are designed specifically for use with Wesco Products. They feature 180° hinged steering, variable speed control and easy handling of forward and reverse movement of the unit.

This product is distributed by:

Wesco Industrial Products, Inc
1250 Welsh Road
North Wales, PA 19454
Tel: 215-699-7031 Fax: 215-699-3836

Contact the factory for parts information and ordering.
Visit us on the web at www.wescomfg.com

Replacement Parts List

Item	Part No.	Description	Qty.
22	273065	Handle Button Assembly (Contains Items 22A-22G)	1
22A		Stop Button	1
22B		Voltage Indicator	1
22C		Bottom Plate	1
22D		Brake Button	1
22E		Switch	1
22F		Throttle	1
22G		Knob	1
23	273066	Nylon Ring	1
24	273067	Rubber Grip	1
25	273068	Air Cylinder	1
26	273069	Protector	1
27	273101	PC Board	1
28	273012	Fan	1
29	273104	Replacement: Nut/Screw (Contains Items 29A & 29B)	1
29A		Nut	1
29B		Screw	1
30	273105	Replacement: Brake Lining and Screw (Contains Items 30A & 30B)	1
30A		Brake Lining	1
30B		Screw	1
31	273106	Replacement: Drive Motor and Brushes (Contains Items 31A & 31B)	1
31A		Drive Motor	1
31B		Brushes	1
32	273107	Drive Wheel	1

Operation

- 1) Press green button on drive unit, green light will come on.
- 2) Pull handle back, power drive is now ready for operation.
- 3) Press throttle rocker slowly forward or reversed, to increase speed press throttle rocker forward.
- 4) When moving in reverse and an emergency stop is required, press the red switch on top of handle. The unit will automatically go into the forward direction.
- 5) To stop, release the throttle rocker and place the handle in the upright position. Turn off the power drive by pressing the green button. When the unit is off the green light will turn off.
- 6) **Never leave power drive unit on while unattended!**

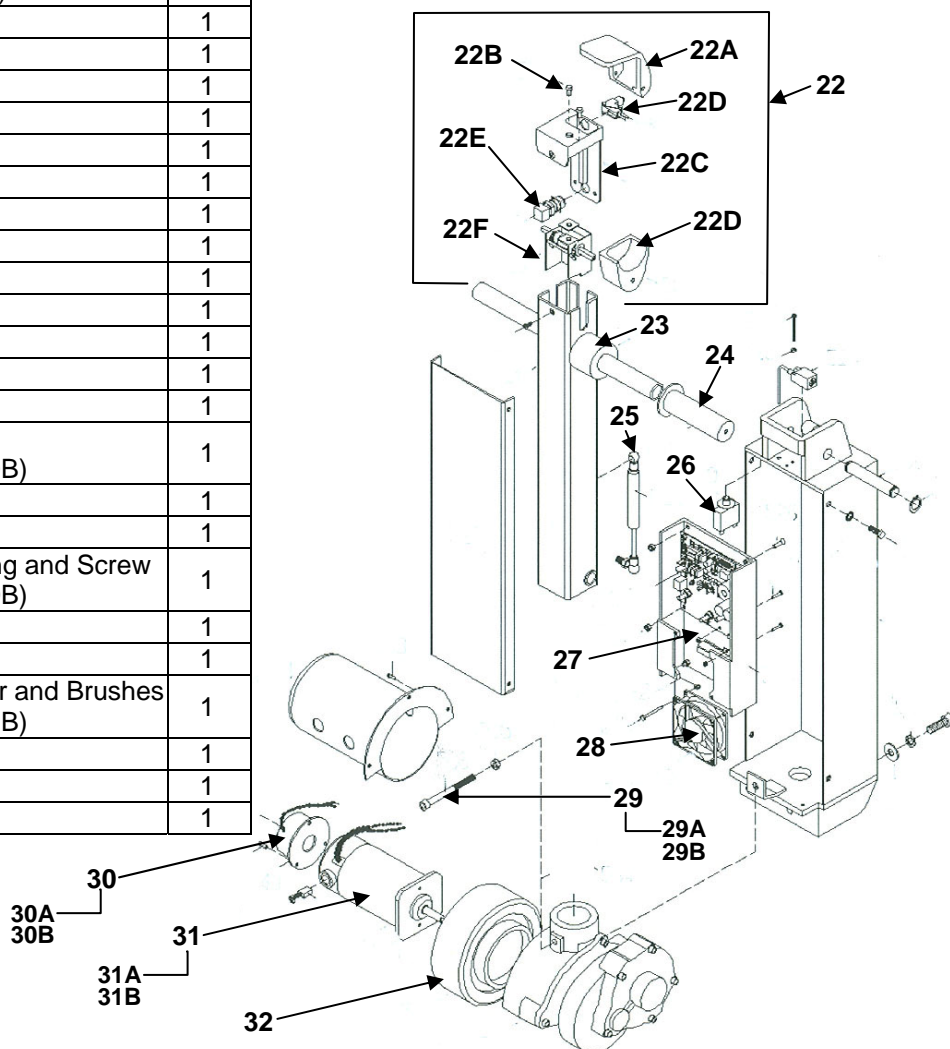


Figure 1