



Instruction Manual

Pallet Truck Drum Lifter

Model: PTDL

Part Number: 273250



Table of Contents

1	General Information	2
1.1	Description	2
1.2	Warranty Information	2
1.3	General Safety Information.....	2
2	Model Schematic	3
2.1	Model Schematic Figure.	3
3	Model Parts List	4
3.1	Parts List (Items 1-49)	5
4	Model Parts List	5
4.1	Parts List (Items 49-92)	5

ATTENTION: TO INSURE SAFE AND EASY USE OF YOUR WESCO PALLET TRUCK, READ THESE INSTRUCTIONS ENTIRELY BEFORE USING.

Description

The Wesco Pallet Truck Drum Lifter is designed to lift 55 gallon drums. It features a hydraulic pallet truck design to lift a drum 4" off the ground. The lifter also has two 6" polyurethane wheels, two 3" polyurethane casters

This product is distributed by:

Wesco Industrial Products, Inc
1250 Welsh Road
North Wales, PA 19454
Tel: 215-699-7031 Fax: 215-699-3836

Contact the factory for parts information and ordering.
Visit us on the web at www.wescomfg.com

Warranty Repairs

If the unit does not work properly, contact your dealer or the factory (215-699-7031) for units less than 90 days old.

Non-Warranty Service

If units are older than 90 days, repairs can be made easily on site with factory supplied parts.

NOTE: Do not send units to the factory for service without first obtaining a "Return Merchandise Authorization" (RMA) number from the customer service department. We will not be responsible for merchandise returned without proper authorization.

Unpacking

When unpacking the Wesco Product, check carefully for shipping damage and missing parts. If damage has occurred or any parts are missing, file a claim with the delivering carrier within 24 hours and notify the dealer from whom the unit was purchased.

General Safety Information

Warning: The Wesco Pallet Trucks are intended for specific functions. Please adhere to the following instructions to insure safe and proper use.

- (1) Maximum capacity - 660 Lbs.
- (2) Do not exceed rated capacity. Injury to persons or property may result from overloading and misuse.
- (3) **Only use on Closed Head Steel Drums!**

Warning

- DO NOT over load this truck beyond its rated capacity.
- DO NOT use on open head drums.
- When not lifting, place the carriage in the lower position
- When transporting a drum, only raise the drum slightly off the ground (No need to lift excessively high)
- Use extreme caution when moving over uneven floors.
- DO NOT use on stairs or inclines.
- Use only for handling 55 gallon steel drums.
- Periodically check for loose or worn hardware; If found replace at once.

LIMITED WARRANTY

WESCO INDUSTRIAL PRODUCTS (WESCO) warrants to the purchaser of this product for a period of ninety (90) days from the date of purchase that this product shall be free of defects in material and/or workmanship, as follows:

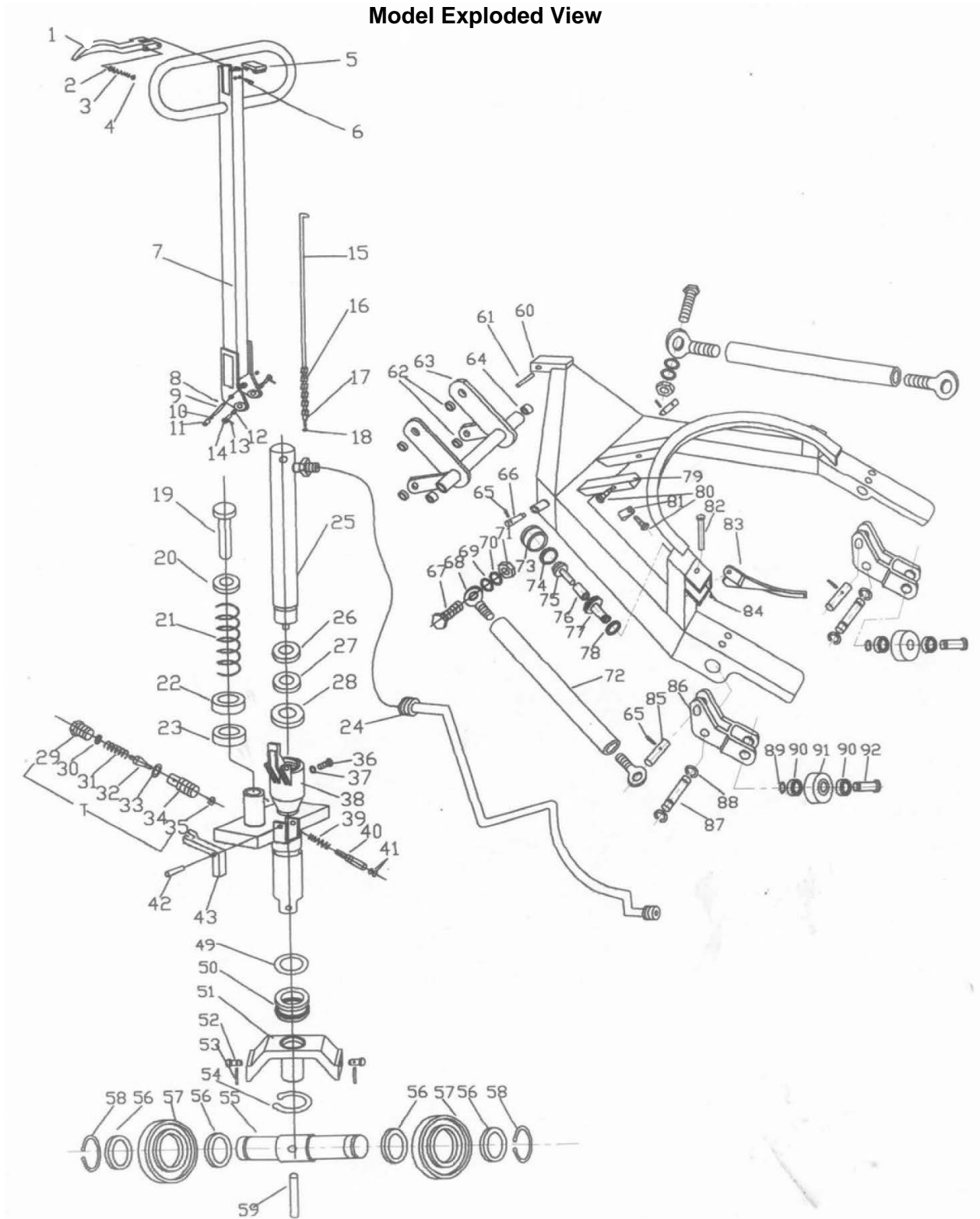
1. WESCO will supply, at no charge, new or rebuilt replacements for any part that fails through a defect in material and/or workmanship during the warranty period. To obtain warranty service, you must deliver the product prepaid, to the WESCO factory.
2. This warranty does not cover any product or product part which has been subject to accident, misuse, abuse or negligence. WESCO shall only be liable under this warranty if the product is used the manner intended by the manufacturer as specified in the written instructions furnished with this product.

REPAIR OR REPLACEMENT AS PROVIDED UNDER THIS WARRANTY IS THE EXCLUSIVE REMEDY OF THE PURCHASER. ANY EXPRESS WARRANTY NOT PROVIDED IN THIS WARRANTY DOCUMENT, AND ANY REMEDY FOR BREACH OF CONTRACT THAT, BUT FOR THIS PROVISION, MIGHT ARISE BY IMPLICATION OR OPERATION OF LAW, IS HEREBY EXCLUDED AND DISCLAIMED. UNDER NO CIRCUMSTANCES SHALL WESCO BE LIABLE TO PURCHASER OR ANY OTHER PERSON FOR ANY INCIDENTAL OR CONSEQUENTIAL DAMAGES, WHETHER ARISING OUT OF BREACH OF WARRANTY, EXPRESS OR IMPLIED, A BREACH OF CONTRACT OR OTHERWISE. EXCEPT TO THE EXTENT PROHIBITED BY APPLICABLE LAW, ANY IMPLIED WARRANTY OF MERCHANTABILITY AND FITNESS FOR ANY PARTICULAR PURPOSE ARE EXPRESSLY LIMITED IN DURATION TO THE DURATION OF THIS LIMITED WARRANTY.

Some states do not allow the exclusion or limitation of incidental or consequential damages, or allow limitations on how long any implied warranty lasts, so the above limitations may not apply to you. This warranty gives you specific legal rights, and you may also have other rights which vary from state to state.

ATTENTION: TO INSURE SAFE AND EASY USE OF YOUR WESCO PALLET TRUCK, READ THESE INSTRUCTIONS ENTIRELY BEFORE USING.

Model Exploded View



**PTDL Pallet Truck Drum Lifter
(Part # 273250)
Instruction Manual**

ATTENTION: TO INSURE SAFE AND EASY USE OF YOUR WESCO PALLET TRUCK, READ THESE INSTRUCTIONS ENTIRELY BEFORE USING.

Complete Parts List

[Numbers refer to the Model Exploded View on Page 4]

Item #	Description	Wesco Part #	Quantity
1	Release Lever	273253	1
2	Steel Ball		1
3	Spring		1
4	Steel Ball		1
5	Cover		1
6	Spring Pin		1
7	Handle		1
8	Spring Pin		1
9	Shaft		1
10	Bushing		2
11	Press Guide		1
12	Bushing		2
13	Set Screw Shaft		2
14	Shaft		2
15	Draw Rod		1
16	Chain		1
17	Head Chain		1
18	Set Nut		1
19	Pump Piston	273460	1
20	Spring Seat		1
21	Spring		1
22	Dust Cover		1
23	Oil Seal	273495	1
24	Oil Pipe		1

Item #	Description	Wesco Part #	Quantity	
25	Lift Piston	273460	1	
26	Dust Cover		1	
27	Oil Seal		1	
28	Oil Seal		1	
29	Screw Plug		1	
30	O-Ring		1	
31	Spring		1	
32	Valve		1	
33	O-Ring		1	
34	Valve Cover		1	
35	Steel Ball		1	
36	Hex Cap Plug		1	
37	O-Ring		1	
38	Valve		1	
39	Spring		1	
40	Top Rod		1	
41	O-Ring		2	
42	Spring Pin		273461	1
43	Discharge Board		273462	1
44	Valve		273463	1
45	Spring		273464	1
46	Bolt	273465	1	
47	O-Ring	273466	1	
48	Hex Cap Plug	273467	1	

Note: Some parts are sold together as a kit.

Handle Kit (Part # 273253): Item #1-18

Hydraulic Cylinder Kit (Part #273460): Items # 19-23 & 25-41

Support Seat Kit (Part # 273496): Items # 49-54

Draw Rod Kit (Part # 273478): Items # 67-72

Arc Clamp Piston Kit (Part # 273479): Items # 73-78

[Continued on Next Page]

Instruction Manual

ATTENTION: TO INSURE SAFE AND EASY USE OF YOUR WESCO DRUM TRUCK, READ THESE INSTRUCTIONS ENTIRELY BEFORE USING.

Parts List (Continued)

[Numbers refer to the Model Exploded View on Page 4]

Item #	Description	Wesco Part #	Quantity
49	Washer	273496	1
50	Bearing		1
51	Support Seat		1
52	Shaft		2
53	Spring Pin		2
54	C-Ring		1
55	Wheel Shaft	273468	1
56	Bearing	273469	4
57	Steering Wheel	273251	2
58	C-Ring	273470	2
59	Spring Pin	273471	1
60	Cart Holder	N/A	1
61	Spring Column Pin	273472	1
62	Bushing	273473	4
63	Beam Assembly	273474	1
64	Bushing	273475	2
65	Spring Column Pin	273476	4
66	Shaft	273477	2
67	Hex Cap Bolt M12	273478	2
68	Release Rod		4
69	Flat Washer		2
70	Spring Washer		2
71	Hex Cap Nut M12		2
72	Draw Rod		2

Item #	Description	Wesco Part #	Quantity
73	Lift Piston Cylinder	273479	1
74	Piston		1
75	DH50 Oil Seal		1
76	Spring		1
77	Piston Cover		1
78	Cir-Nut M32		1
79	Support Board	273482	1
80	Cir-Screw Mount	273483	2
81	Sheet Iron	273484	1
82	Shaft	273485	1
83	Arc Clamp	273486	1
84	Spring	273487	1
85	Shaft	273488	2
86	Wheel Holder	273489	2
87	Shaft	273490	2
88	C-Ring	273491	4
89	C-Ring	273492	2
90	Bearing	273493	4
91	Load Wheel	273252	2
92	Shaft	273494	2

Note: Some parts are sold together as a kit.

Handle Kit (Part # 273253): Item #1-18

Hydraulic Cylinder Kit (Part #273460): Items # 19-23 & 25-41

Support Seat Kit (Part # 273496): Items # 49-54

Draw Rod Kit (Part # 273478): Items # 67-72

Arc Clamp Piston Kit (Part # 273479): Items # 73-78