

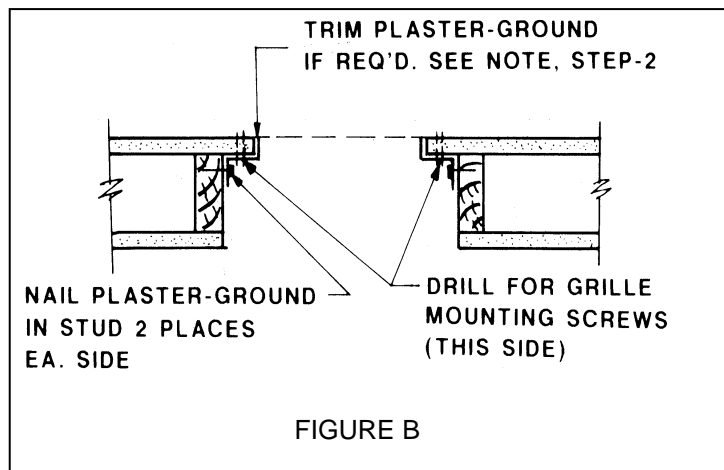
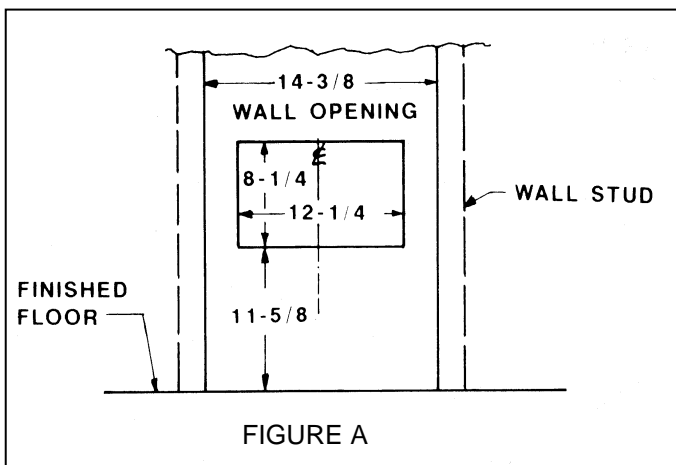
# Installation Instructions

## Rear Outlet Register 6801 or 6802

### KIT CONTENTS:

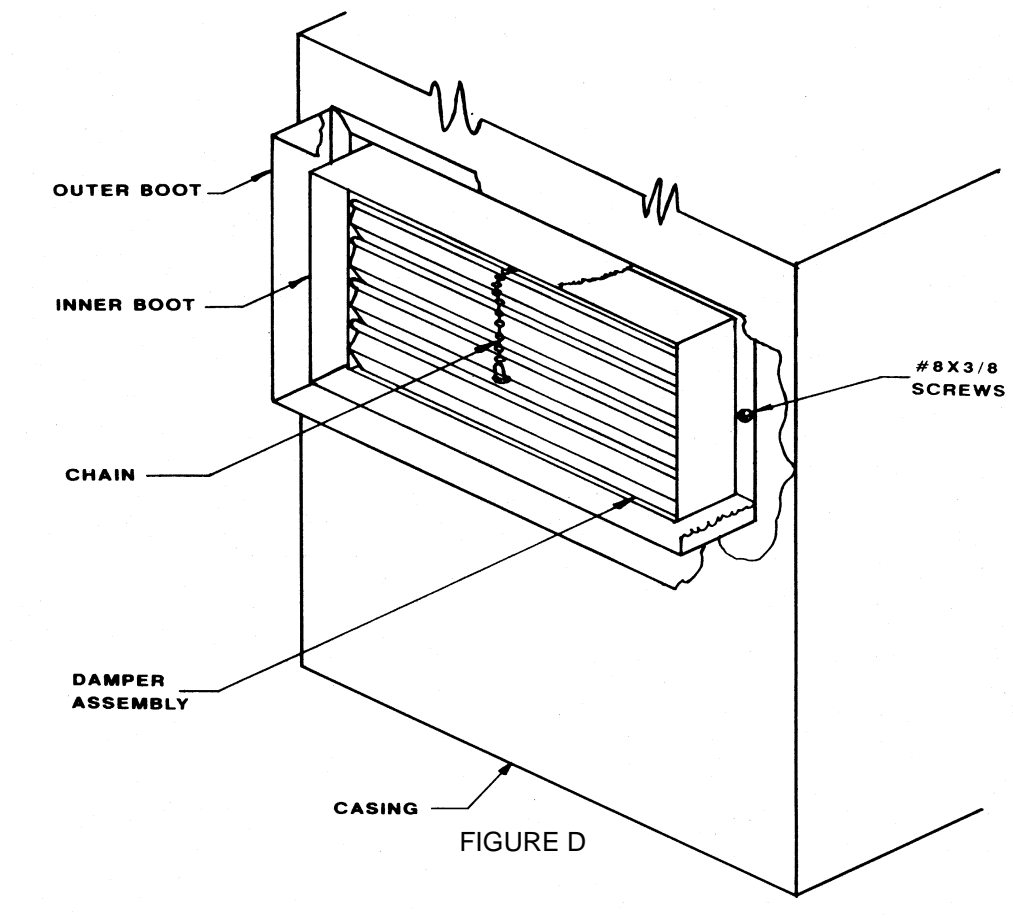
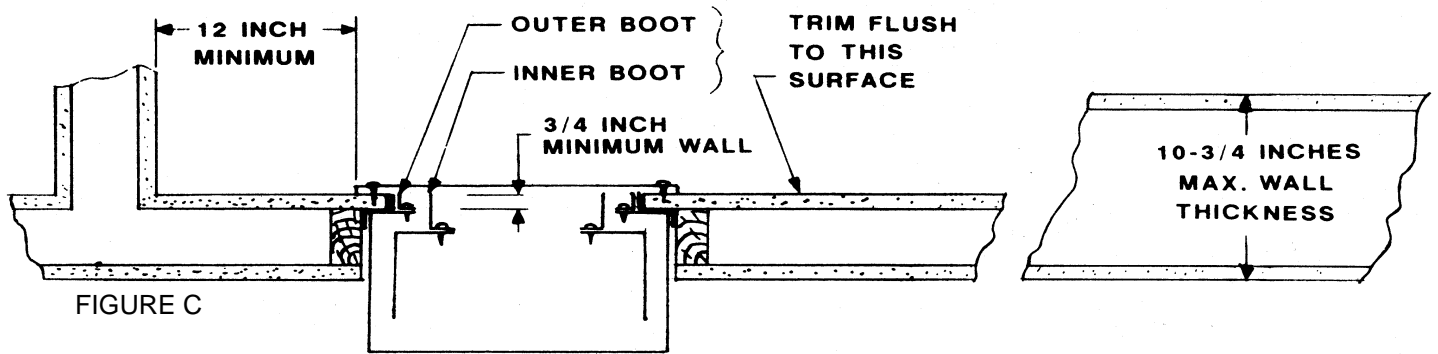
- |     |                         |      |                         |
|-----|-------------------------|------|-------------------------|
| (1) | Boot Extension - Inner  | (1)  | Damper Assembly         |
| (1) | Boot Extension - Outer  | (18) | Screws #8 x 3/8"        |
| (1) | Plaster-ground Assembly | (2)  | Screws #8 x 1 1/2" Wood |
| (1) | Rear Grille Assembly    |      |                         |

Summary: An internal multiple blade damper in the rear-outlet for control of warm air delivery through the rear register. Be sure this accessory is of the type and design required for use with your furnace. Refer to your furnace owner's manual for additional information.



1. Measure and mark the wall for vent opening as shown in Figure A and Figure B. Check the wall for any electrical wiring before cutting wall opening. Reroute electrical wiring if necessary. Cut hole through the wall, furnace side and grille side.
2. Place plaster-ground in opening from grille side and attach into drywall, as shown in Figure B. If flanges of plaster-ground extend beyond wall surface, they must be trimmed off flush with the wall surface.
3. For grille mounting, drill through two (2) existing holes in plaster-ground using them as pilot holes. Use .125 diameter drill bit as shown in Figure B.
4. Before setting the furnace into position, carefully cut 5 x 7 inch rectangular opening on back of cabinet where embossed. Edges of cut opening must be straight and smooth.
5. Place outer boot against cabinet and align flanges exactly on edges of cut hole, mark ten (10) screw locations on cabinet. Remove boot and drill #33 size holes for 3/8" screws. Attach outer boot later. Outer and inner boots are sized to extend through normal plaster thickness. If "Drywall" or other thin material, the boots must be trimmed off flush with the wall surface.
6. Remove inner knockout plate as follows:
  - A. Punch in lower corners with screwdriver blade.
  - B. Break knockout side and bottom connecting tabs: holding screwdriver blade sideways against tab and striking it lightly with a hammer.
  - C. Swing plate outward; bend it back and forth to break the top tabs.
  - D. Remove knockouts for (6) screws from inner liner.
7. After furnace is placed in position, pass outer boot through plaster-ground and fasten to cabinet with ten (10) 3/8" screws. Place inner boot in position and fasten with six (6) 3/8" screws along top and bottom edges only. Place damper assembly in inner boot as shown in Figure D and fasten with two (2) 1 1/2" screws, one on each side. Thread chain through key hole in clip on outlet grille and attach bell end.

8. Place outlet grille in position with keyhole at top. Align with holes drilled in Step 3. Fasten with two (2) 1½" screws.



**CAUTION:** Do not use this grille on any surface which is less than 12 inches from any adjacent wall. See Figure C above.